

UniMac Chest Heated  
Flatwork Finisher

**UniMac**<sup>®</sup>

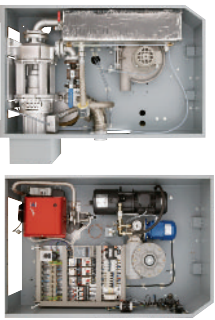
15" (370 mm)  
20" (500 mm)  
24" (600 mm)  
32" (800 mm)



***Expert Solutions from the Laundry Experts***

# UniMac Chest Heated Flatwork Finisher Specifications

## Side Views



- Industrial dryer ironer with high recovery, premium heated drying chest.
- Self-contained recirculation thermo oil heated chest. *(Gas heated models)*
- Silent inverter drive, power burner and thermo oil recirculation pump. *(Steam heated chest models also available)*
- "Low nox" fully adjustable gas valve and power burner on gas models.
- Highly efficient drying due to strong vapor exhaust on roll.
- Variable thermostatic temperature and safety overheat controls.
- Linen return to the front. *(rear optional)*
- Roll covered with springs and felt.
- Fully automatic, hydraulic opening and closing of bed to roll, with auto adjustable pressure.
- Variable speed frequency inverter drive.
- Feed ribbons for easy and safe feeding.
- Very compact size.



Roll Diameter - in (mm)	15" (370)	15" (370)	15" (370)	15" (370)	20" (500)	20" (500)	20" (500)	20" (500)	20" (500)	24" (600)	24" (600)	24" (600)	32" (800)	32" (800)	
Finishing Width - in (mm)	69" (1750)	79" (2000)	99" (2500)	118" (3000)	79" (2000)	99" (2500)	118" (3000)	130" (3300)	118" (3000)	118" (3000)	130" (3300)	130" (3300)	118" (3000)	130" (3300)	
Ironing Speed ft/m (m/m)	3.5-10 (1-3)	3.5-10 (1-3)	3.5-10 (1-3)	3.5-10 (1-3)	5-18 (1.5-5.5)	5-18 (1.5-5.5)	5-18 (1.5-5.5)	5-18 (1.5-5.5)	5-18 (1.5-5.5)	5-21.5 (1.5-6.5)	5-21.5 (1.5-6.5)	5-21.5 (1.5-6.5)	10-39.5 (3-12)	10-39.5 (3-12)	
Optional High Speed	3.5-21 (1-6.5)	3.5-21.5 (1-6.5)	3.5-21.5 (1-6.5)	3.5-21 (1-6.5)	5-39.5 (1.5-12)	5-39.5 (1.5-12)	5-39.5 (1.5-12)	5-39.5 (1.5-12)	5-39.5 (1.5-12)	5-46 (1-14)	5-46 (1-14)	5-46 (1-14)	10-52.5 (3-16)	10-52.5 (3-16)	
Overall Dimensions L" x D" x H" - in (mm)	97"x41"x47" (2474x1050x1199)	107"x41"x47" (2724x1050x1199)	127"x41"x47" (3224x1050x1199)	147"x41"x47" (3724x1050x1199)	112"x43"x47" (2850x1091x1199)	132"x43"x47" (3350x1091x1199)	152"x43"x47" (3850x1091x1199)	163"x43"x47" (4150x1091x1199)	163"x43"x47" (4150x1091x1199)	163"x55"x57" (4135x1400x1450)	175"x55"x57" (4435x1400x1450)	168"x63"x60" (4255x1600x1520)	179"x63"x60" (4555x1600x1520)	179"x63"x60" (4555x1600x1520)	
Roll Motor HP - (KW)	5 (37)	5 (37)	2.01 (1.5)	2.01 (1.5)	2.01 (1.5)	2.01 (1.5)	2.01 (1.5)	2.01 (1.5)	2.01 (1.5)	2.95 (2.2)	2.95 (2.2)	5.36 (4)	5.36 (4)		
Exhaust Motor HP - (KW)	.34 (25)	.34 (25)	.34 (25)	.34 (25)	.34 (25)	.34 (25)	.34 (25)	.34 (25)	.34 (25)	1.01 (75)	1.01 (75)	1.01 (75)	1.01 (75)		
Hydraulic Pump Motor HP - (KW)	5 (37)	5 (37)	5 (37)	5 (37)	5 (37)	.5 (37)	.5 (37)	.5 (37)	.5 (37)	5 (37)	5 (37)	5 (37)	5 (37)		
Circulation Pump Motor HP - (KW)	2.95 (2.2)	2.95 (2.2)	2.95 (2.2)	2.95 (2.2)	2.95 (2.2)	2.95 (2.2)	2.95 (2.2)	2.95 (2.2)	2.95 (2.2)	4.02 (3)	4.02 (3)	4.02 (3)	4.02 (3)		
Roll Exhaust Duct - in (mm)	3" (75)	3" (75)	3" (75)	3" (75)	3" (75)	3" (75)	3" (75)	3" (75)	3" (75)	4.75" (120)	4.75" (120)	6.25" (160)	6.25" (160)		
<b>Gas Heating</b>															
Maximum Gas Input - Btu (KW)	78,110 (52)	78,110 (52)	78,110 (52)	78,110 (52)	78,110 (52)	78,110 (52)	78,110 (52)	78,110 (52)	78,110 (52)	310,421 (91)	310,421 (91)	643,742 (189)	643,742 (189)		
Gas Inlet - in (mm)	1/2" (12.7)	1/2" (12.7)	1/2" (12.7)	1/2" (12.7)	1/2" (12.7)	1/2" (12.7)	1/2" (12.7)	1/2" (12.7)	1/2" (12.7)	1" (25.4)	1" (25.4)	1" (25.4)	1" (25.4)		
Gas Exhaust Duct - in (mm)	3.5" (90)	3.5" (90)	3.5" (90)	3.5" (90)	3.5" (90)	3.5" (90)	3.5" (90)	3.5" (90)	3.5" (90)	4.75" (120)	4.75" (120)	4.75" (120)	4.75" (120)		
Electrical Requirements • Circuit Breaker	208-240/60/3 • 30 230/50/3 • 30 400/50/3 • 16 440-480/60/3 • 15	208-240/60/3 • 30 230/50/3 • 30 400/50/3 • 16 440-480/60/3 • 15	208-240/60/3 • 30 230/50/3 • 30 400/50/3 • 16 440-480/60/3 • 15	208-240/60/3 • 30 230/50/3 • 30 400/50/3 • 16 440-480/60/3 • 15	208-240/60/3 • 30 230/50/3 • 30 400/50/3 • 16 440-480/60/3 • 15	208-240/60/3 • 30 230/50/3 • 30 400/50/3 • 16 440-480/60/3 • 15	208-240/60/3 • 30 230/50/3 • 30 400/50/3 • 16 440-480/60/3 • 15	208-240/60/3 • 30 230/50/3 • 30 400/50/3 • 16 440-480/60/3 • 15	208-240/60/3 • 30 230/50/3 • 30 400/50/3 • 16 440-480/60/3 • 15	208-240/60/3 • 30 230/50/3 • 30 400/50/3 • 16 440-480/60/3 • 15	208-240/60/3 • 60 230/50/3 • 60 400/50/3 • 32 440-480/60/3 • 30	208-240/60/3 • 60 230/50/3 • 60 400/50/3 • 32 440-480/60/3 • 30	208-240/60/3 • 60 230/50/3 • 60 400/50/3 • 32 440-480/60/3 • 30	208-240/60/3 • 70 230/50/3 • 70 400/50/3 • 40 440-480/60/3 • 40	208-240/60/3 • 70 230/50/3 • 70 400/50/3 • 40 440-480/60/3 • 40
<b>Steam Heating</b>															
Steam Inlet - in (mm)	N/A	N/A	N/A	N/A	N/A	N/A	N/A	N/A	N/A	1" (25.4)	1" (25.4)	1.25" (31.75)	1.25" (31.75)		
Condensate Return - in (mm)	N/A	N/A	N/A	N/A	N/A	N/A	N/A	N/A	N/A	.75" (19)	.75" (19)	1" (25)	1" (25)		
Electrical Requirements • Circuit Breaker	N/A	N/A	N/A	N/A	N/A	N/A	N/A	N/A	N/A	208-240/60/3 • 60 230/50/3 • 60 400/50/3 • 32 440-480/60/3 • 30	208-240/60/3 • 60 230/50/3 • 60 400/50/3 • 32 440-480/60/3 • 30	208-240/60/3 • 60 230/50/3 • 60 400/50/3 • 32 440-480/60/3 • 30	208-240/60/3 • 70 230/50/3 • 70 400/50/3 • 40 440-480/60/3 • 40	208-240/60/3 • 70 230/50/3 • 70 400/50/3 • 40 440-480/60/3 • 40	
Boiler HP - kg/hr	N/A	N/A	N/A	N/A	N/A	N/A	N/A	N/A	N/A	120	130	180	200		
Mini-Max Steam Pressure - lb (kg)	N/A	N/A	N/A	N/A	N/A	N/A	N/A	N/A	N/A	120 - 150 (8 - 10)	120 - 150 (8 - 10)	120 - 150 (8 - 10)	120 - 150 (8 - 10)		
Approx. Net Weight - lb (kg)	1543 (700)	1720 (780)	2161 (980)	2646 (1200)	2645 (1200)	2976 (1350)	3252 (1475)	3527 (1600)	5732 (2600)	6393 (2900)	6834 (3100)	7496 (3400)	7496 (3400)		

For further details on installation refer to Installation, Operation and Maintenance Instructions supplied with the ironer. Due to continuous product improvements, design and specifications are subject to change without notice. Ironer models are made to suit a variety of electrical service characteristics. See your UniMac distributor for specifications.

[www.uniwash.com](http://www.uniwash.com)

Alliance Laundry Systems  
Shepard Street, Ripon, WI 54971 Telephone: 1-800-587-5458  
© Copyright 2003 Alliance Laundry Systems LLC